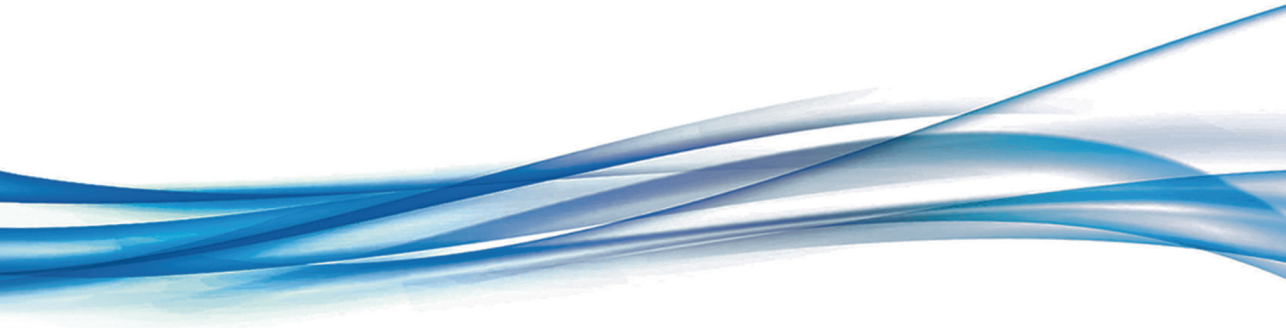




EDEN

SWISS MADE
EDOF IOL

PREMIUM HYBRID DESIGN

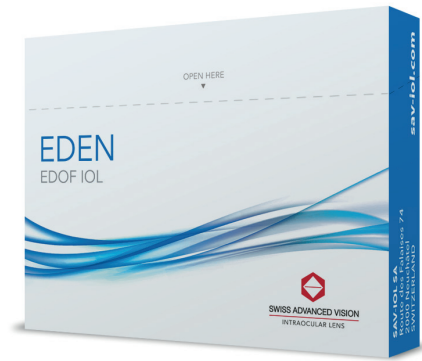


SWISS ADVANCED VISION
INTRAOCULAR LENS

EDEN LENS

EDEN is a premium hybrid EDOF intraocular lens designed to correct the vision post-cataract surgery. Developed and manufactured entirely in Switzerland, this high-quality lens offers through a fine combination of three optical elements (refractive, diffractive, aspheric) a continuous near to distant vision while minimizing the potential visual disturbances.

At the core of the EDEN lens stands the **revolutionary EDOF technology** “Instant Focus”. To provide an optimal centration and the required stability in the capsular bag, EDEN benefits from an innovative closed loop haptic design.



**Continuous vision
with minimized
dysphotopsia**

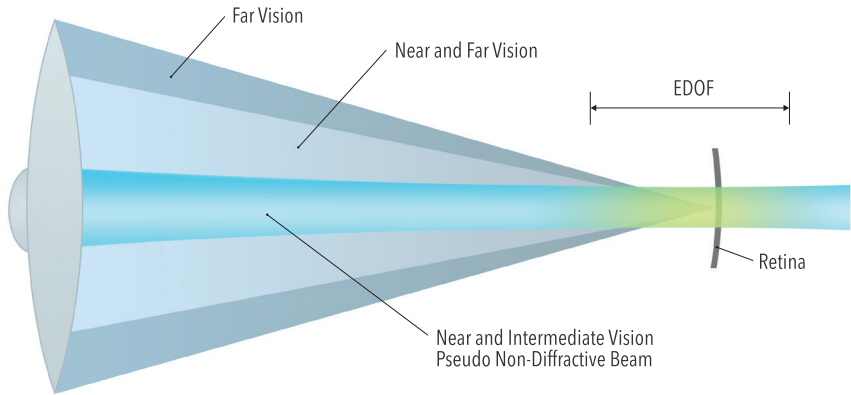
INSTANT FOCUS TECHNOLOGY

Instant Focus is a unique advanced patented EDOF technology developed to replace the natural accommodation of the crystalline lens. As a very high precision aspheric optical element used in the center of the lenses, Instant Focus extends the depth of focus between the near and intermediate vision.

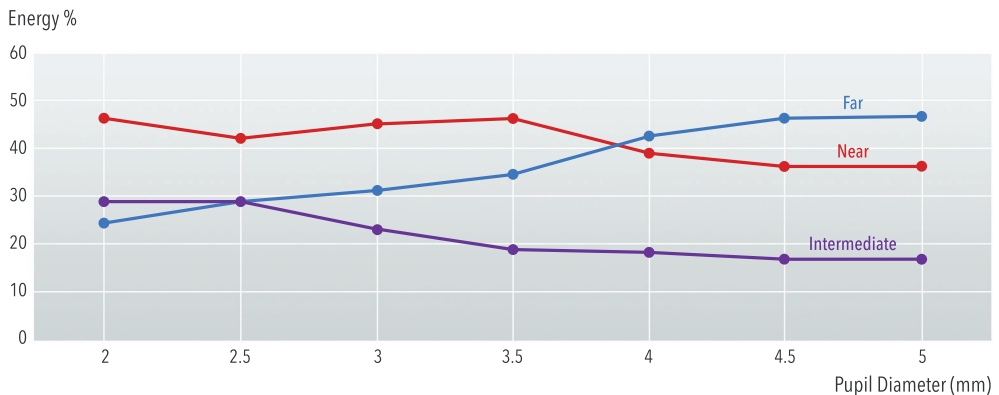
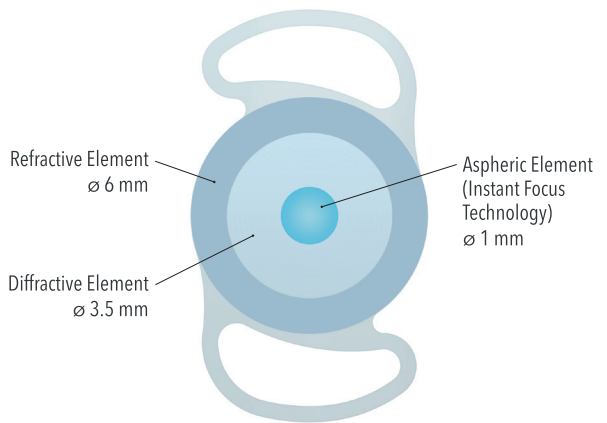
This cutting-edge technology turns the incident wavefront into a pseudo non-diffractive beam (PNDB). The resulting light waves' interferences enable a **constant resolution and light intensity** on the retina. Consequently, Instant Focus allows a continuous near to intermediate vision free of visual adverse effects in addition to a fast neuroadaptation; therefore, a higher level of comfort for the patient.

LIGHT DISTRIBUTION

Optimized for near and intermediate vision

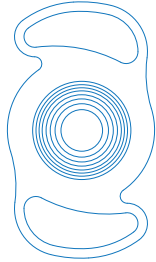


The **aspheric element** in the center of the lens provides a continuous near to intermediate vision regardless of the pupil size. The diffractive element provides near and distant visions balancing the light intensity to slightly increase the near vision. The refractive element provides the distant vision in relation with the pupil aperture.

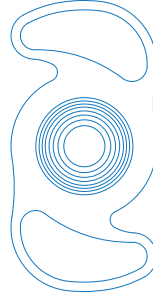


TECHNICAL INFORMATION

Eden 108M
Ø 10.8 mm



Eden 124M
Ø 12.4 mm



Lens type	Pseudophakic single piece foldable IOL
Power range	+5.0 D to +30.0 D (by 0.5 D steps)
Optical diameter	6.0 mm
Optical design	Hybrid multizone (refractive, diffractive, aspheric)
Add/EDOF	+3.0 D (nominal value)
UV protection	Cutoff at 370 nm
Material	Hydrophilic acrylic (26 % water content)
Square edge design	360° (posterior face)
Haptic design	Closed loop with 0° angulation
Packaging	Plastic blister
Recommended injector size	≥ 2.2 mm

SAV-IOL SA

Route des Falaises 74
2000 Neuchâtel
SWITZERLAND

+ 41 32 566 54 00
info@sav-iol.com
sav-iol.com



Website



Email

DISTRIBUTED BY:



SWISS ADVANCED VISION
INTRAOCULAR LENS

Information in this marketing document is subject to modification without prior notice. Regulatory restrictions may apply in certain markets. Instant Focus is a registered trademark of SAV-IOL SA.
© 2017 SAV-IOL SA - All Rights Reserved